

Hi,

my name is Brynja, Lilja and Margrét.

We are going to talk about the municipality of Höfn.

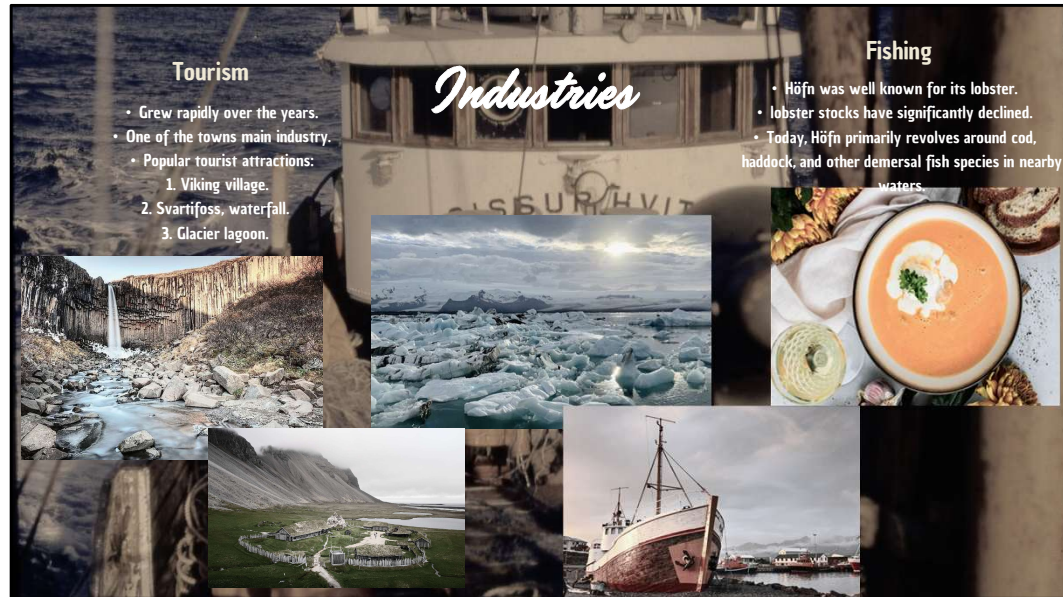


## Sveitarfélagið Hornafjörður – Sagan

The story of the town Höfn began in the summer of 1897 when a merchant moved there from a nearby town, creating a commercial center. It got market rights in 1988 and merged with nearby districts in 1994, creating the municipality of Hornafjörður.

## Um Höfn

The town Höfn is located in southeast Iceland and lies on a narrow strip of land between a fjord and a glacier, Vatnajökull. It covers an area of around 6,280 km<sup>2</sup> and is 450 km from the capital, Reykjavík. The population of around 2500 people and about 1800 people live in Höfn.



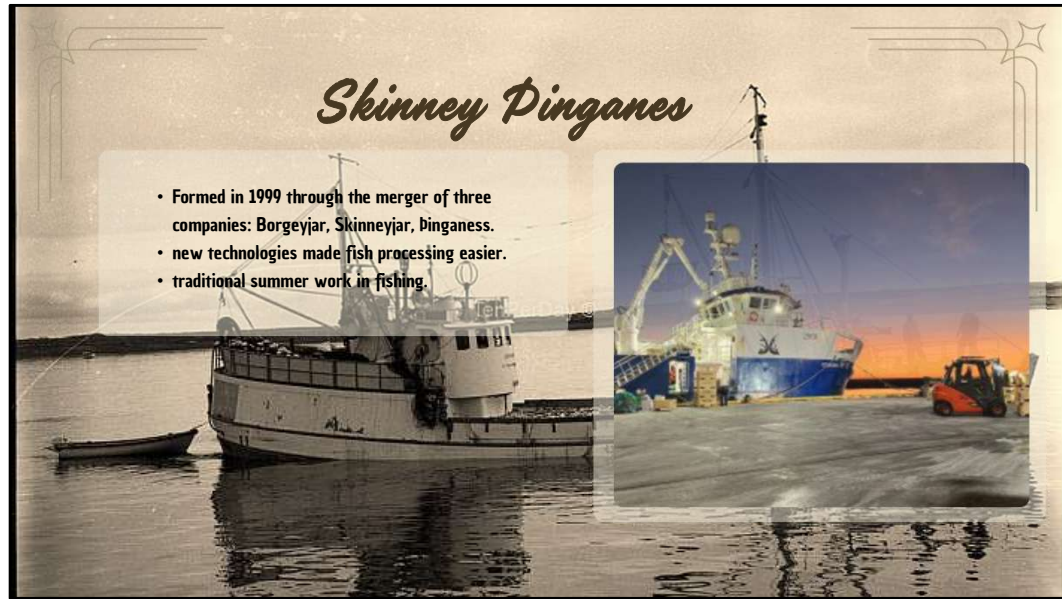
The biggest industries in the town is fishing and tourism.

Tourism in Höfn has grown rapidly in recent years, and it is now one of the town's main industries. The attraction in the municipality is the viking village, Svartifoss waterfall and glacier lagoon

Höfn's fishing industry,

Today, the fishing industry in Höfn mostly revolves around cod, haddock, and other fish species in the These fish are caught, processed, and exported.

Höfn was well known for its lobster fisheries, earning a reputation as a hub for lobster fishing and pro recent years, lobster stocks have declined due to environmental changes and overfishing.



The fish company Skinney-Pinganes was created by three other companies being merged in 1999: Borgeyjar, Skinneyjar, Þinganes.

Various improvements have been made to the fish processing equipment and renewed with newer and larger vessels.

During the summer, many young people (16 and up) have been employed, especially in lobster processing. It is a long tradition for young people in Höfn to get summer work in fishing.



# FAS

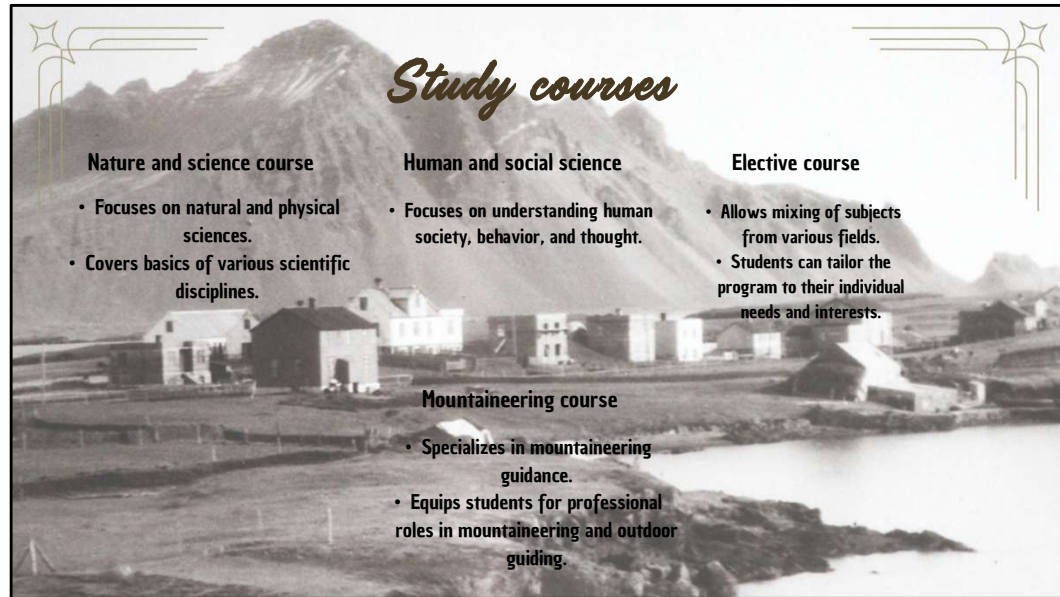
- FAS was founded in 1987
- Located first in a small village outside the town Höfn.
- Moved to Höfn in 2002.
- FAS offers internship, like the mountaineering program.
- Has about 150 students.
- The school collaborates with other schools.



A school in Nesjahreppur 1960.



The secondary school in Austur-Skaftafellssýsla, founded in 1987, initially operated in Nesjaskóli near relocating to Nýheimar in 2002. Serving around 200 students, the school offers a flexible curriculum and personalized learning, including both general academic courses and internships like its mountaineering program. Learning and computer-based education are key components, and the school collaborates with other schools to provide these options.



in Nature and science course and in human and social science are they preparing students for univerit

in elective course - students can mix subjects from various fields. The track prepares for diverse studi  
graduation, depending on what the student chooses to focus on.

Mountaineering course - This program, specializing in mountaineering guidance, its designed for indi  
advance their foundational skills and pursue careers in mountaineering and guiding.

